

# Predictive Maintenance of large Machine-Fleets with Deep Learning

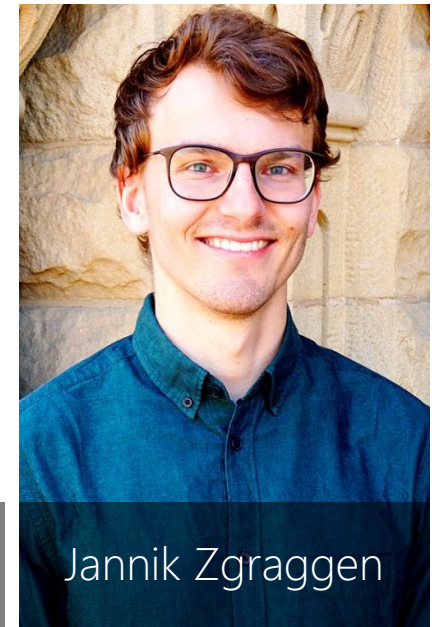
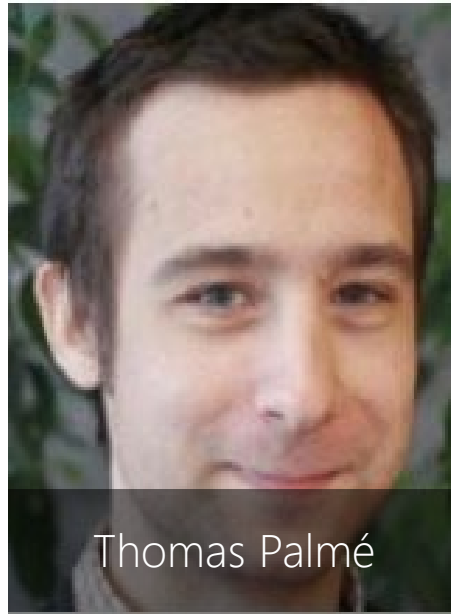
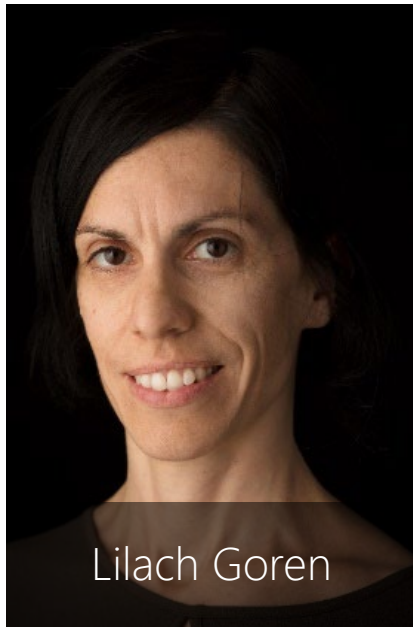
Dr. Lilach Goren Huber  
ZHAW School of Engineering

F&E Konferenz zu Industrie 4.0  
Januar 2022



## Smart Maintenance Team at ZHAW

---



[www.zhaw.ch/de/engineering/institute-zentren/idp/forschungsthemen/smart-maintenance/](http://www.zhaw.ch/de/engineering/institute-zentren/idp/forschungsthemen/smart-maintenance/)

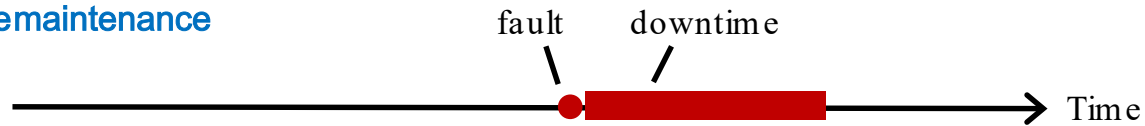
# Introduction

---

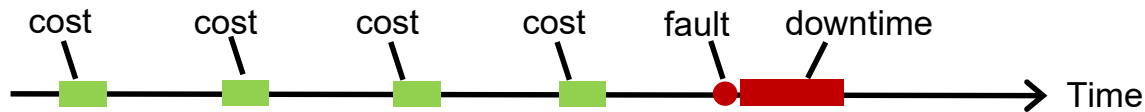


# What is predictive maintenance?

## Reactivemaintenance



## Preventivemaintenance



## Condition based maintenance

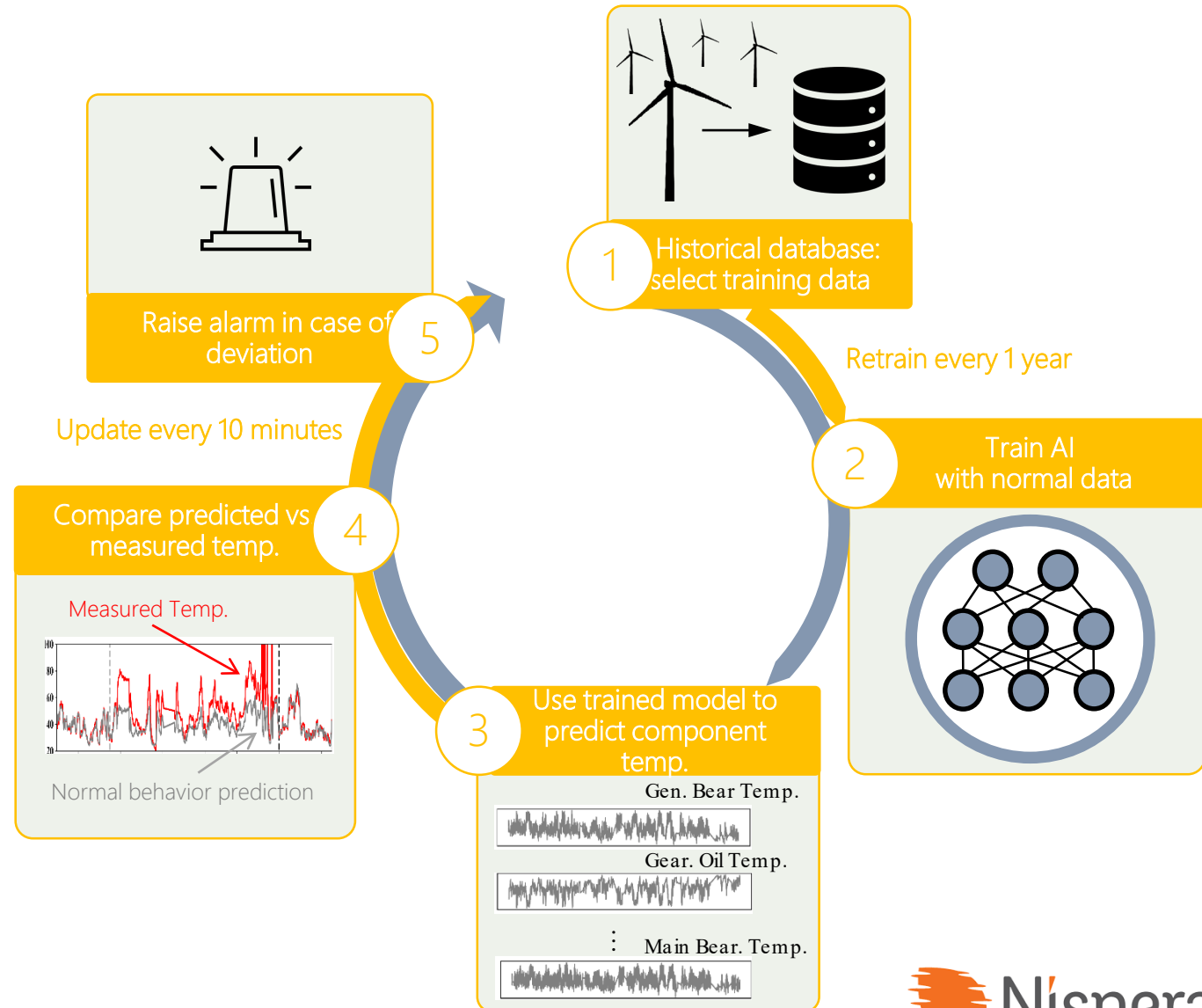


## Predictive maintenance

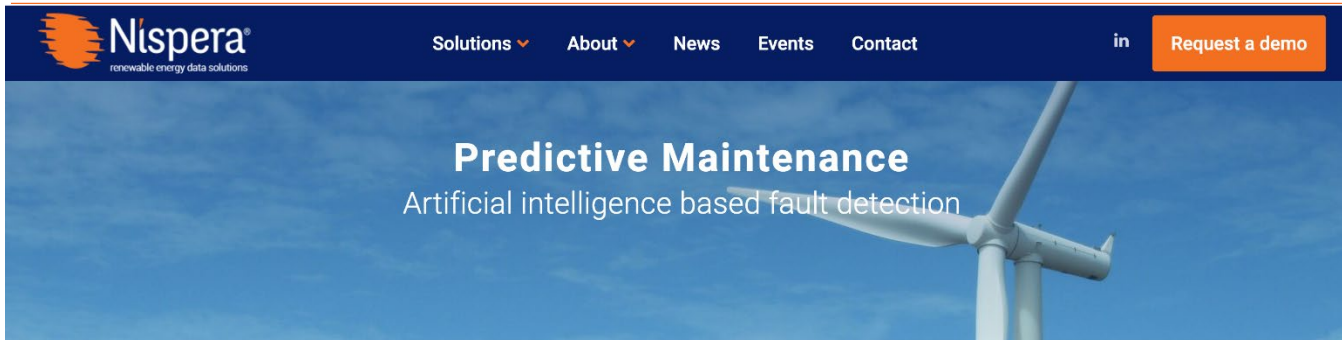


- ✓ Shorter and more accurate repair
- ✓ Reduced downtimes
- ✓ Increased planability
- ✓ Cost-effective scheduling

# AI for Smart Maintenance

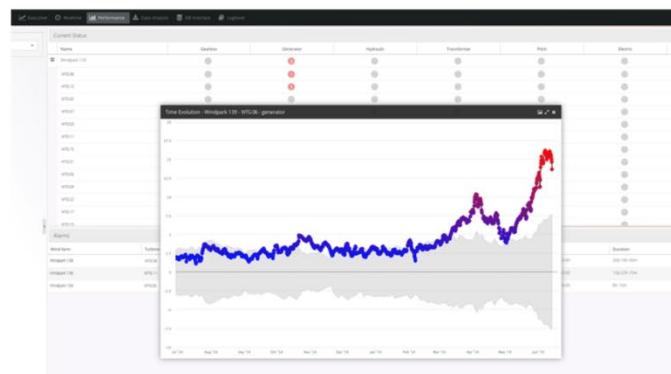


# Upscale to Market



## Detect faults before they occur

Nispera's predictive maintenance solution uses artificial intelligence to identify the failure patterns of your assets and release alarms at an early stage



## Nispera's Predictive Maintenance

- Detects faults of components up to several months before they occur
- Utilises the existing SCADA data, no need for additional hardware
- Provides estimation about Remaining Useful Lifetime (currently under development)

[nispera.com/solutions/predictive-maintenance](https://nispera.com/solutions/predictive-maintenance)

# Wirtschaftspartner

---

**Bystronic**

**swissport**

**Nispera**



Schweizerische Eidgenossenschaft  
Confédération suisse  
Confederazione Svizzera  
Confederaziun svizra

**STADLER**  
Cleverer Lösungen auf der Schiene

**ZÜND**  
swiss cutting systems

**iwb**

Bundesamt für Strassen ASTRA  
Office fédéral des routes OFROU  
Ufficio federale delle strade USTRA

**General Electric**

**ALTIS**

**EKZ**

**mespas**

**ALSTOM**

**am-tec**  
switzerland

**oxand**  
Asset, Ageing & Risk Management

**SBB CFF FFS**

**EnBW**  
Energie braucht Impulse



**WINGD**  
Winterthur Gas & Diesel

**MACQUARIE**

**SIEMENS**

**ASE**

**STADTWERK**  
WINTERTHUR



**Endress+Hauser**  
People for Process Automation